

HVAC KEYNOTES:

- 1

REFER TO DETAIL #1 SHEET M-102 FOR CONTINUATION.
- 2

REFER TO DETAIL #2 SHEET M-102 FOR CONTINUATION.
- 3

INSTALL CONDENSING UNITS PER MANUFACTURER'S INSTALLATION INSTRUCTIONS IN MECHANICAL YARD SECURED TO SLAB. COORDINATE EXACT LOCATION IN FIELD WITH ARCHITECT. EXTEND INSULATED REFRIGERANT LINES WITH SUPPORTS SECURED TO SLAB TO EXTERIOR WALL. PENETRATE EXTERIOR WALL WITH SLEEVE. RISE TO ABOVE CEILING, AND CONTINUE TO CORRESPONDING INDOOR UNIT. SEAL WALL PENETRATIONS WEATHER-TIGHT. PROVIDE WHITE UV/WEATHER RESISTANT MASTIC ON EXPOSED INSULATION.
- 4

INSTALL CONDENSING UNIT ON ROOF PER MANUFACTURES INSTALLATION INSTRUCTIONS WITH VIBRATION ISOLATION AND EQUIPMENT SUPPORTS PER ARCHITECT'S DRAWINGS. SECURE CONDENSING UNIT TO SUPPORTS. EXTEND INSULATED REFRIGERANT LINES WITH LONG RADIUS ELBOWS TO EXTERIOR WALL WITH SUPPORTS (MIRO BLOCK SUPPORTS OR APPROVED EQUAL) MIN. EVERY 6'. PENETRATE EXTERIOR WALL. RISE TO MAX HEIGHT, AND CONTINUE GROUPED NEATLY WITH SUPPORTS TO CORRESPONDING INDOOR UNIT. SEAL AROUND REFRIGERANT LINES TO MAINTAIN BUILDING ENVELOPE AND PREVENT MOISTURE INFILTRATION THROUGH OPENING. VERIFY EXACT PENETRATION LOCATION IN FIELD WITH ARCHITECT PRIOR TO ROUGH-IN. PROVIDE UV AND WEATHER RESISTANT MASTIC ON EXPOSED EXTERIOR INSULATION. COORDINATE INSTALLATION OF ROOF EQUIPMENT WITH ROOFING CONTRACTOR TO MAINTAIN ROOFING WARRANTY.
- 5

INSTALL CONDENSING UNITS PER MANUFACTURER'S INSTALLATION INSTRUCTIONS ON INTERIOR PLATFORM. COORDINATE EXACT LOCATION IN FIELD WITH ARCHITECT. EXTEND INSULATED REFRIGERANT LINES WITH SUPPORTS SECURED TO PLATFORM TO EXTERIOR DATA ROOM WALL. PENETRATE WALL WITH SLEEVE. AND RISE WITH SUPPORTS TO CORRESPONDING INDOOR UNIT. SEAL WALL PENETRATIONS.
- 6

INSTALL WALL MOUNTED DUCTLESS SPLIT SYSTEM SECURED TO WALL. COORDINATE EXACT LOCATION AND MOUNTING HEIGHT WITH ARCHITECT IN THE FIELD PRIOR TO ROUGH-IN. INSTALL PER MANUFACTURER'S INSTRUCTIONS, PROVIDING ALL ACCESSORIES AND ITEMS REQUIRED. EXTEND INSULATED, GRAVITY FED CONDENSATE DRAIN LINE TO HUB DRAIN BELOW SHOWN ON PLUMBING PLANS AND TERMINATE WITH AIR GAP. COORDINATE WITH PLUMBING CONTRACTOR PRIOR TO ROUGH-IN.
- 7

INSTALL CEILING CASSETTE UNIT IN CEILING HUNG FROM STRUCTURE ABOVE. INSTALL PER MANUFACTURER'S INSTRUCTIONS, PROVIDING ALL ACCESSORIES AND ITEMS REQUIRED. EXTEND INSULATED CONDENSATE DRAIN LINE FULL SIZE FROM CONDENSATE PUMP TO HUB DRAIN ABOVE CEILING SHOWN ON PLUMBING PLANS AND TERMINATE WITH AIR GAP. COORDINATE WITH PLUMBING CONTRACTOR PRIOR TO ROUGH-IN.
- 8

PROVIDE AND INSTALL ELECTRIC HEATER AS SCHEDULED. PROVIDE WALL INSTALLATION MOUNTING BRACKETS AND WALL MOUNTED THERMOSTAT. MOUNT WALL HEATER AT MAXIMUM HEIGHT PER MANUFACTURE'S INSTALLATION INSTRUCTIONS.
- 9

PROVIDE MANUAL BALANCING DAMPER AND BALANCE TO CFM SHOWN. DUCT TAPS SHALL BE A MINIMUM OF 24" FROM END OF SUPPLY AIR DUCT. (TYPICAL)
- 10

COORDINATE EXACT THERMOSTAT LOCATION AND HEIGHT IN FIELD WITH ARCHITECT AND ENGINEER PRIOR TO ROUGH-IN.
- 11

EXTEND EXHAUST DUCTS TO EXTERIOR WALL AND CONNECT TO WALL LOUVER PLENUM BOX FULL SIZE. COORDINATE EXACT LOUVER LOCATION WITH ARCHITECT PRIOR TO ROUGH-IN. GENERAL CONTRACTOR SHALL COORDINATE FRAMED OPENING THROUGH WALL WITH STRUCTURAL SHOP DRAWINGS.
- 12

PROVIDE SPIRAL DUCTWORK WITH PERFORATED LINER, PAINT GRIP FINISH, AND CONCENTRIC FITTINGS AT APPROX. 21" A.F.F. TO B.O.D. SUPPLY GRILLE AND LOUVERS SHALL BE AS DETAILED ON SHEET M-202. SPIRAL DUCT AND SUPPORTS SHALL BE PAINTED BY PAINTING CONTRACTOR. PAINT COLOR AS DIRECTED BY ARCHITECT. PROVIDE STRAPS WITH THREADED RODS EVERY 5' CAPABLE OF SUPPORTING WEIGHT OF DOUBLE WALLED ROUND DUCTWORK. DOUBLE WALLED DUCT TO BE COORDINATED WITH LIGHTING, STRUCTURE, ETC. PRIOR TO CONSTRUCTION OF DUCTWORK. SIZES SHOWN ARE INSIDE, FREE AREA DIAMETER.

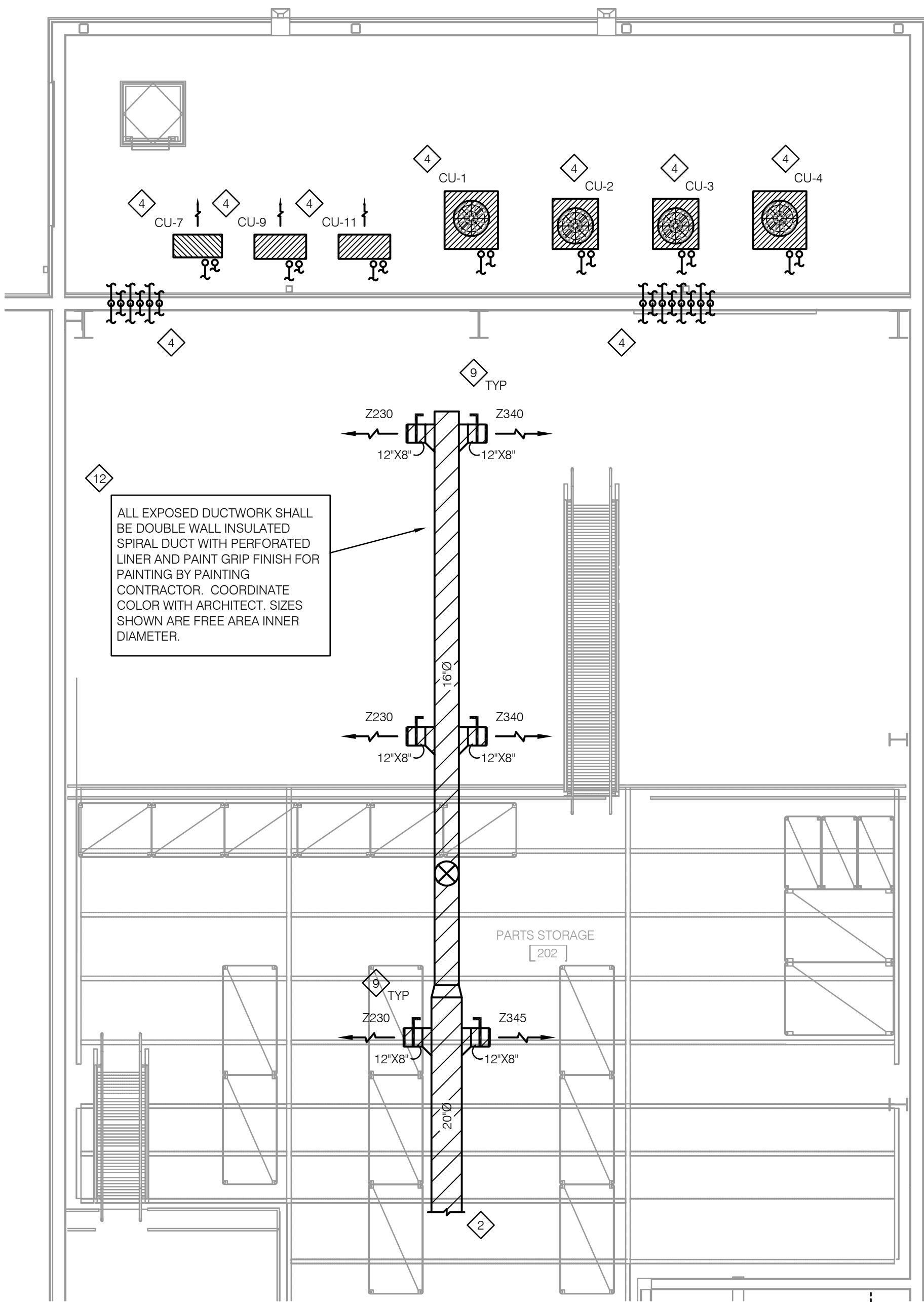
NOTE:

ROOFTOP EQUIPMENT INSTALLATION SHALL BE DESIGNED AND CONSTRUCTED TO MEET THE LATEST WIND LOADING CRITERIA OF ASCE 7-16. ANCHOR ROOF CURBS TO STRUCTURE BELOW. SECURE HVAC UNITS, EXHAUST HOODS, FANS AND COWLINGS WITH WIRE ROPE TO THEIR RESPECTIVE ROOF CURB AND ROOF DECK. PROVIDE STAINLESS STEEL FASTENERS NOT EXCEEDING 6" ON CENTER BETWEEN THE EQUIPMENT, TRANSITION PIECES AND THE ROOF CURB.

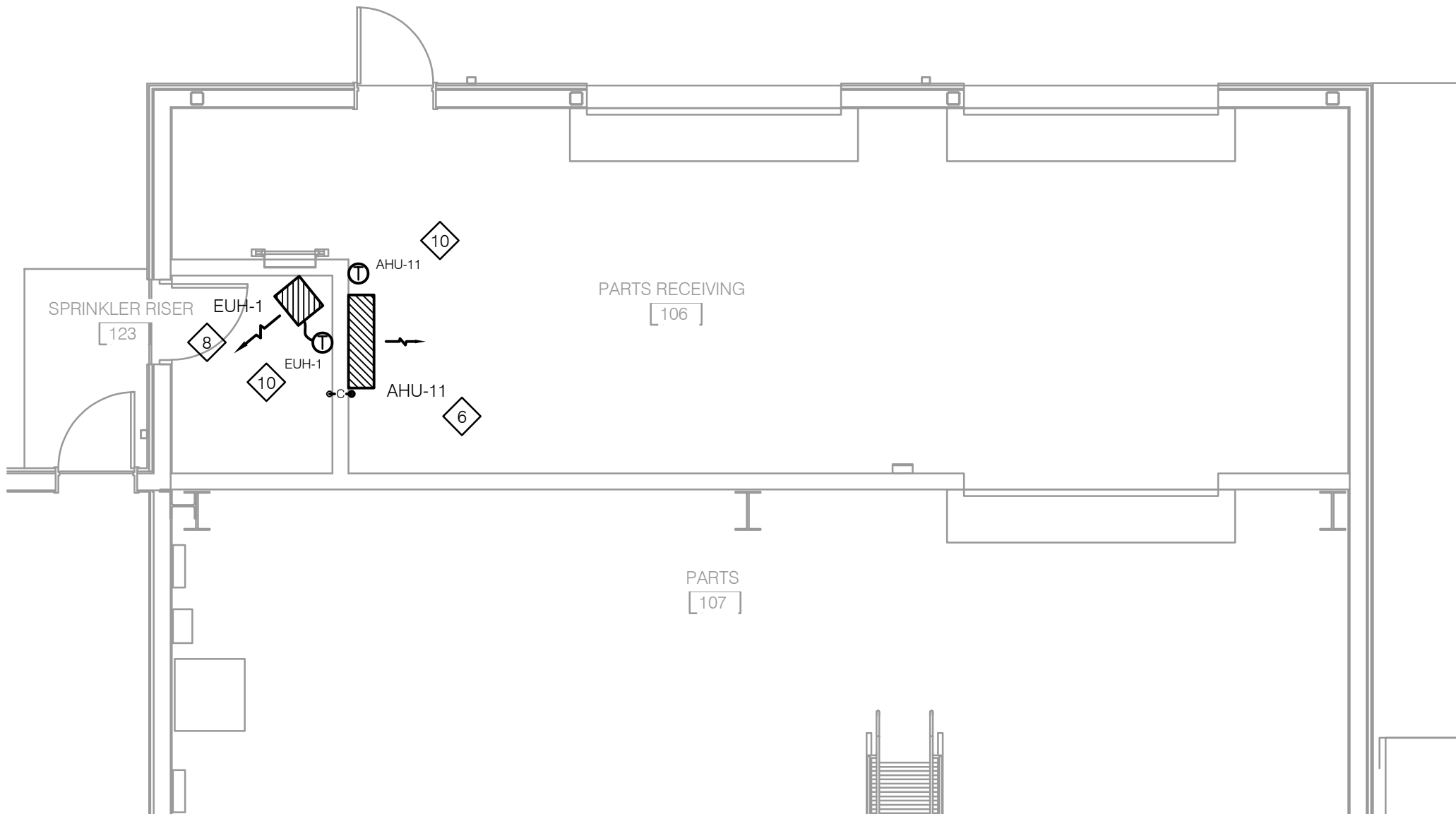
DUCTWORK LEGEND

	RECTANGULAR LOW PRESSURE DUCTWORK
	2" DOUBLE WALL INSULATED SPIRAL DUCT WITH PERFORATED LINER AND PAINT GRIP FINISH. (I.D. SHOWN)

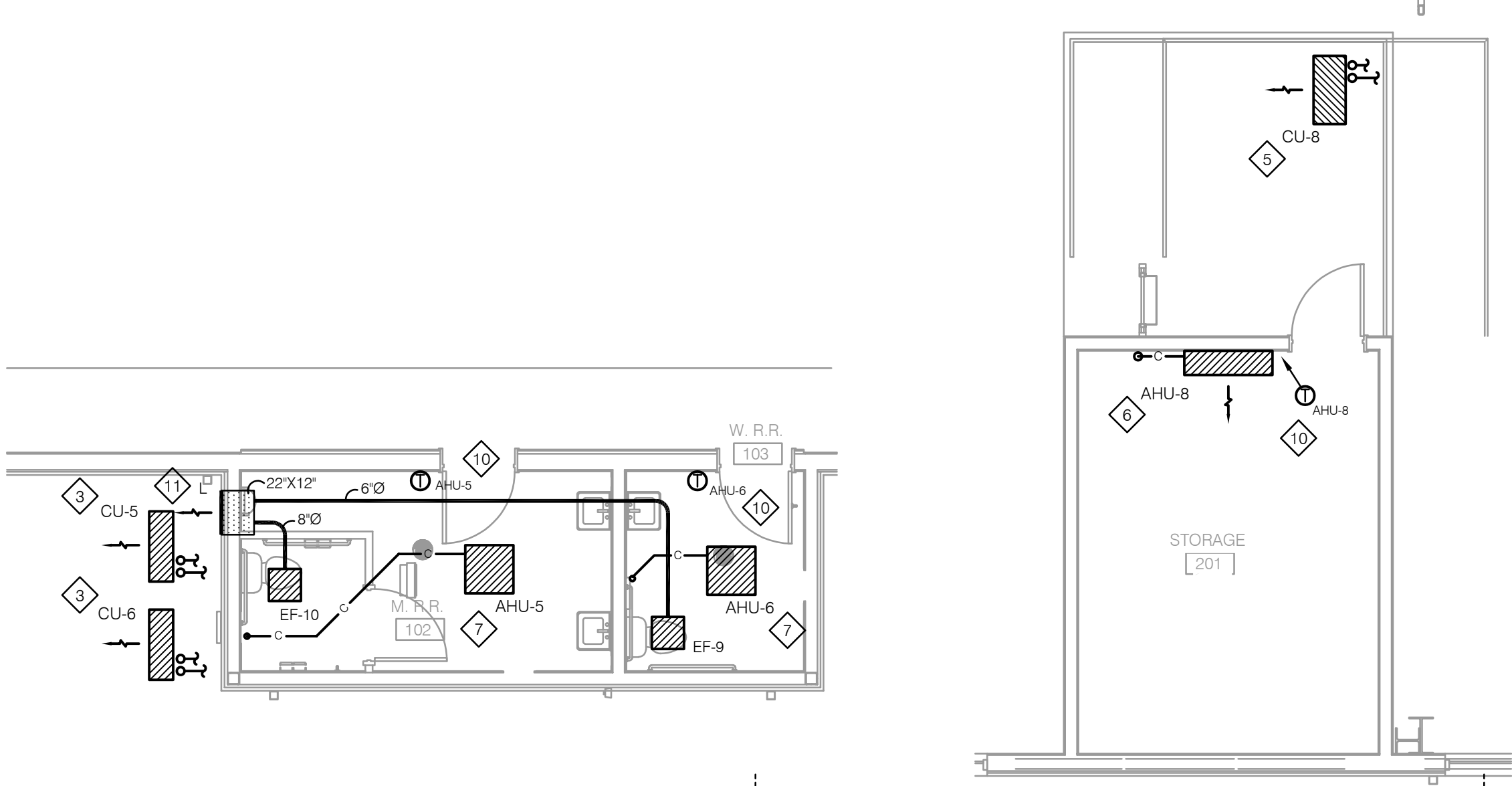
HVAC LEGEND	
SYMBOL	DESCRIPTION
AFF	ABOVE FINISHED FLOOR
AFG	ABOVE FINISHED GRADE
AP	ACCESS PANEL
BTUH	BRITISH THERMAL UNITS PER HOUR
CFM	CUBIC FEET PER MINUTE
CD	CONDENSATE DRAIN
E/A	EXHAUST AIR
ED	EMERGENCY DRAIN
EF	EXHAUST FAN
EH	EXHAUST HOOD
F/A	OUTSIDE AIR
FD	FIRE DAMPER
FLA	FULL LOAD AMPS
FPM	FEET PER MINUTE
GC	GENERAL CONTRACTOR
GPM	GALLONS PER MINUTE
HP	HORSEPOWER
KW	KILOWATT
MAX	MAXIMUM
MCA	MINIMUM CIRCUIT AMPACITY
MIN	MINIMUM
MOCP	MAXIMUM OVERCURRENT PROTECTION
NTS	NOT TO SCALE
R/A	RETURN AIR
RPM	REVOLUTIONS PER MINUTE
S/A	SUPPLY AIR
SEER	SEASONAL ENERGY EFFICIENCY RATIO
SF	SUPPLY FAN
TYP	TYPICAL
SP	STATIC PRESSURE
SSSC	SOLID STATE SPEED CONTROLLER
C	CONDENSATE DRAIN LINE
ED	EMERGENCY DRAIN PAN DRAIN LINE
	UNION
	BALL VALVE OR BUTTERFLY VALVE
	SUPPLY DIFFUSER
	RETURN/EXHAUST GRILLE
	SIDEWALL GRILLE / REGISTER
	DUCT RISE, DROP OR OFFSET
	MANUAL BALANCING DAMPER (RECT DUCT)
	MANUAL BALANCING DAMPER (ROUND DUCT)
	MOTORIZED DAMPER (120-1-60)
	ELEC THERMOSTAT
	STARTER



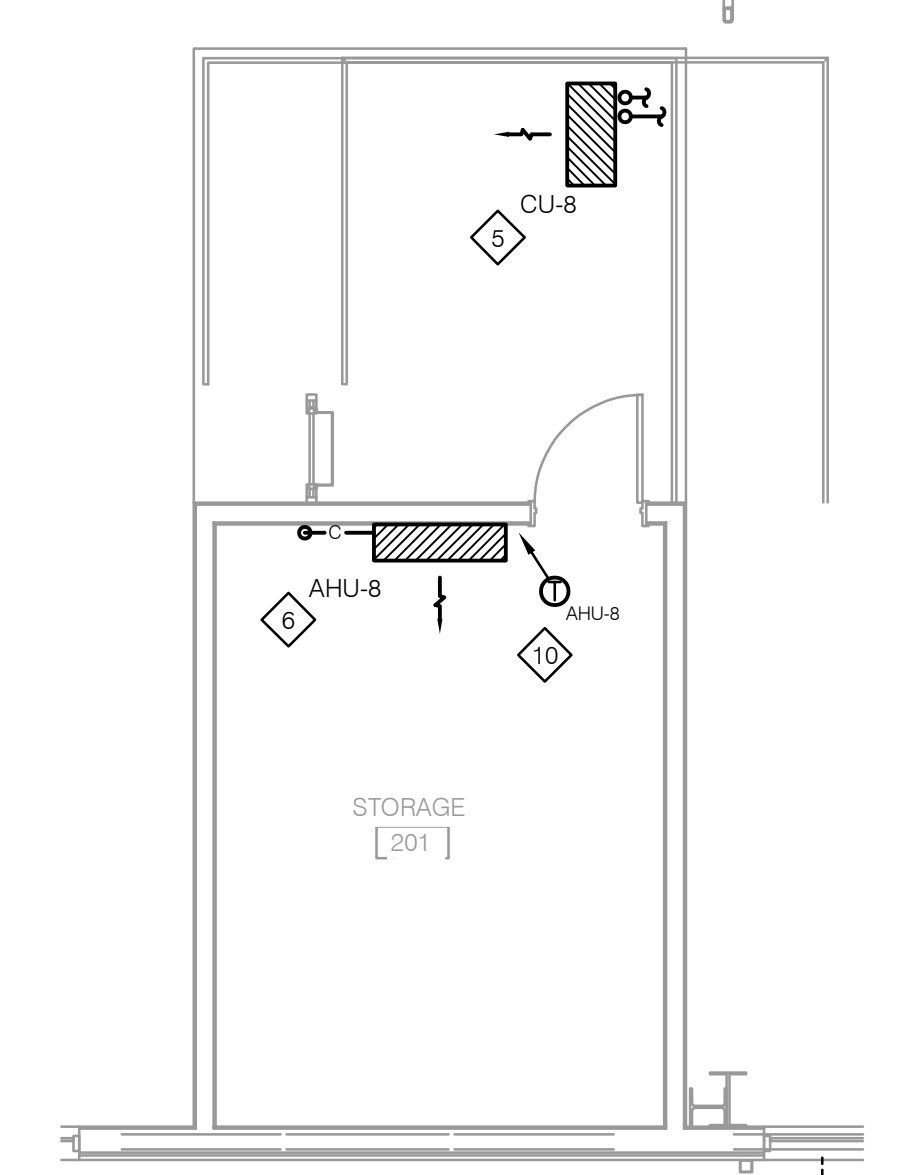
1 ENLARGED PLUMBING PLAN - PARTS STORAGE
3/16" = 1'-0"



2 ENLARGED HVAC PLAN - PARTS RECEIVING
3/16" = 1'-0"



3 ENLARGED HVAC PLAN - SHOP RESTROOMS
3/16" = 1'-0"



4 ENLARGED HVC PLAN - SHOP DATA
3/16" = 1'-0"



ASSOCIATED DESIGN GROUP, INC.
3909 W Congress Street, Suite 201
Lafayette, Louisiana 70506
Phone: (337) 234-5710
Email: adginc@adginc.org

Project No. 25326



NEW CONSTRUCTION
FORD PRO
FOR
MIKE WILLIS
2010 PATTON ST.

© COPYRIGHT 2019,
RANDY M. GOODLOE, A.I.A. APAC
ALL INFORMATION, EITHER DRAWN, WRITTEN,
OR IMPLIED APPEARING IN THIS DOCUMENT
SHALL NOT BE DUPLICATED, DISCLOSED, OR
OTHERWISE USED WITHOUT THE WRITTEN
PERMISSION OF THE AUTHOR, RANDY M.
GOODLOE, AIA, APAC. THIS DOCUMENT IS AN
INSTRUMENT OF SERVICE AND IS THE SOLE
PROPERTY OF THE AUTHOR. FURTHERMORE,
THE USE OF THIS DOCUMENT FOR ANY
PURPOSE SHALL BE REVOKED, IF THE INTENT
OF THE DESIGN OR THE CONSTRUCTION
TECHNIQUES OR DETAILS SHOWN HEREIN
ARE NOT ADHERED TO OR THE
CONTRACTUAL AGREEMENT GOVERNING
THEIR USE ARE NOT STRICTLY ADHERED TO.

PROJECT NO.

25012

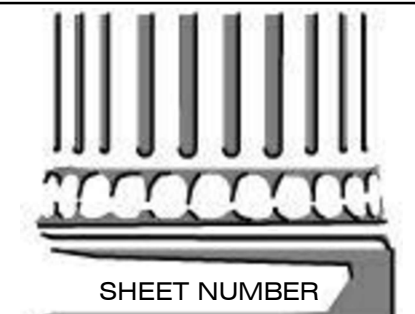
PROJECT MANAGER

JM

DATE ISSUED

2026.05.22

REVISED



M-103
ENLARGED
HVAC PLANS